



# Community Schools Connection

Issue #4 March 2025

---

**R-TAC  
Professional  
Learnings**

**Building Stronger  
Communities:  
The Hub's First Year of**

## March

- 5th - [Aligning LCAP and Community Schools: A Unified Approach to Support and Success](#)
- 6th - [Learning Together: A Community for Site Level Leads](#)
- 7th - [Capitol Area R-TAC Office Hours](#)
- 12th - [Building Bridges: Strengthening Family and Community Partnerships](#)
- 14th - [Integrated System of Support Learning Series](#)
- 20th - [District Systems for Community Schools](#)
- 21st - [COE Network for Community Schools](#)
- 26th - [Teaching and Learning in Community Classrooms](#)

## April

- 4th - [Capitol Area R-TAC Office Hours](#)
- 10th - [Learning Together: A Community for Site Level Leads](#)
- 12th - [Building Bridges: Strengthening Family and Community Partnerships](#)
- 23rd - [Teaching and Learning in Community Classrooms](#)

## May

- 2nd - [Capitol Area R-TAC Office Hours](#)

# Impact



## A Hub for Community and Connection

In August 2024, Western Placer Unified School District proudly opened The Hub, its Family Resource Center, with a mission to create a centralized space where families, students, and community partners could come together for support, education, and connection. Just under a year later, The Hub has already made a meaningful impact on our community.

Staffed by Mikaela Zimmerman, the district's Community School Coordinator and Homeless/Foster Liaison, and Emily Barney, a College and Career Technician, The Hub has become a cornerstone for families seeking resources, guidance, and opportunities. Mikaela focuses on connecting families with vital community services, while Emily brings a wealth of expertise in college and career readiness, organizing field trips, resume workshops, and job exploration services for parents and students.

The Hub's centralized structure makes it easier to introduce families to additional services, as accessing one resource often opens the door to others.

The Hub established a strong partnership with Feeding the Foothills. This vital partnership led to the creation of three food pantries across the district. The main pantry is housed at The Hub, with a satellite pantry at First Street Elementary and plans underway for another at Sheridan Elementary. These pantries have been crucial in supporting families facing food insecurity, especially during school breaks when access to school meals is limited. The Hub hosted two large food distributions, over the December break, serving more than 300 families during a time when food needs are often heightened.

As we continue to grow and strengthen partnerships, we are excited about the possibilities ahead and grateful for the ongoing support from our community. Together, we're building something

special: a network of care, opportunity, and hope for every family in the Western Placer Unified School District.

## Related COE Professional Learnings

---

### SCOPE:

- March 6th - [21 CSLA Module #8 - Inquiry Through Play](#)
- March 7th and March 8th - [Dr. Jose Medina Workshops](#)
- March 11th - [EPiCC Professional Learning Network](#)
- March 19th - [SEL Academic Integration Series](#)
- March 20th - [Universal Screener Webinar with Glean Education: Session 3: We've Screened, Now What?](#)
- March 27th - [Engaging with Family and Community Partners](#)
- April 1st - [Building Biliteracy: Strengthening Hmong, Spanish, Vietnamese, Dual Language Programs](#)
- April 3rd - [SEL Community of Practice](#)
- April 22nd - [SEL & Sports Alignment \(Me, You, We\)](#)
- April 22nd - [Maker Education Institute \(SEL & Academic Integration\)](#)
- April 25th - [Early Learning: At the Heart of it All Conference](#)
- May 15th and May 16th - [SEL and Wellness Summit](#)
- June 16th - June 18th - [Joyful Literacy Statewide Institute](#)

### PCOE:

- March 4th - [Suicide Prevention Training Series - Be Sensitive Be Brave](#)
- March 11th, March 18th, or March 25th - [Universal Virtual Training UDL Immersion](#)
- March 20th - [LUDIA Virtual Learning Event](#)
- April 1st - [Universal Virtual Training UDL Immersion](#)
- April 3rd and April 4th - [Suicide Prevention Training - ASIST](#)
- April 7th and April 8th - [Universal In-Person Training UDL Immersion](#)
- April 23rd - [Essential Spreadsheet Skills for Educators](#)
- April 24th - [Suicide Prevention Training - Safe Talk](#)

## News & Updates

---

- The CDE is in the process of scoring the CCSPP Cohort 4 Implementation Grant applications. Proposed grantees will be announced and presented to the State Board of Education for approval at the May SBE meeting.

## State Transformational Assistance Center (S-TAC)

### Collective Learning Space

- The S-TAC will be hosting the next Collective Learning Space on March 4th from 3:00 - 4:30 pm. The topic will be Collaborative Leadership and Decision Making with a focus on the Annual Progress Report ([registration](#)).

### California Community Schools EMPOWER Summit

- The California Community Schools EMPOWER Summit will be on June 12th and 13th, 2025, at the Fresno Convention Center and DoubleTree Hotel ([registration](#)).

## Regional Transformational Assistance Center (R-TAC)

- Please join us on May 7th from 9am-3pm for an in-person culminating event for all Community School teams across the region. We are excited to reflect, celebrate, and plan together ([registration](#)).

---

# R-TAC Partner Highlight

---



## Expanded Learning in California

Expanded Learning in California encompasses both state-funded programs, such as the [After School Education and Safety](#) (ASES) and [Expanded Learning Opportunities Program](#) (ELO-P), as well as federally funded programs like the [21st Century Community Learning Centers](#) (21st CCLC). These programs provide TK-12 students with experiential learning opportunities before school, after school, during the summer, and throughout intersession.

The [Region 3 Expanded Learning](#) technical assistance team at the Sacramento County Office of Education supports Expanded Learning staff across [Alpine, Colusa, El Dorado, Nevada, Placer, Sacramento, Sierra, Sutter, Yolo, and Yuba](#) counties by

providing resources, coaching, mentoring, consulting, and professional learning opportunities.

Expanded Learning is a key component of community schools, working alongside other initiatives to support the whole child. The [updated ELO-P template](#) requires LEAs to document collaboration efforts (e.g., Community Schools, Multi-Tiered Systems of Support) in Section 9: Community Partnerships. Many LEAs are currently updating this document for local governing board approval.

To stay informed, [sign up](#) for our Region 3 Expanded Learning monthly resource email.



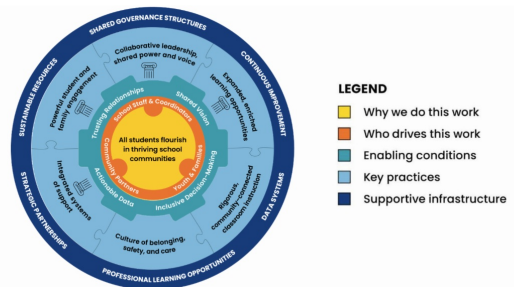
## Cesar Chavez Day

March 31st is Cesar Chavez Day. We honor the legacy of this iconic civil rights leader and labor advocate. His commitment to justice and equality continues to inspire generations. In recognition of his contributions, the Cesar Chavez Foundation offers comprehensive school curricula designed to teach students about his life, work, and the importance of social change.

These educational resources are perfect for classrooms looking to engage students in meaningful conversations about history, activism, and community.

Explore these valuable resources by visiting: <https://chavezfoundation.org/education-fund/>

## CS Forward Framework



Download the full [Framework: Essentials for Community School Transformation](#) document.



**"Children are not things to be molded but are people to be unfolded".**

**-Jess Lair**



(916) 228-3989



caprtac@scoe.net



capareartac.org

Capitol Area R-TAC | 10474 Mather Blvd | Sacramento, CA 95655 US

[Unsubscribe](#) | [Update Profile](#) | [Constant Contact Data Notice](#)



Try email marketing for free today!